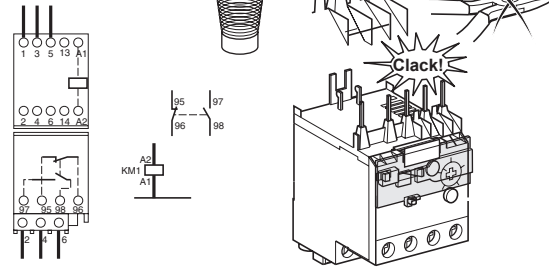
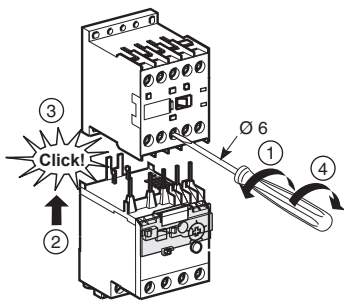


Mounting / Montage / Montage  
Montaje / Montaggio / Montagem

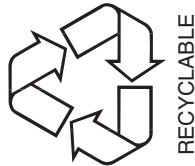
Wiring Diagram / Schéma de branchement  
Anschlußschema / Diagrama de conexión  
Schema di collegamento /  
Esquema de ligação

W9 1378171 0151 A03  
www.schneider-electric.com



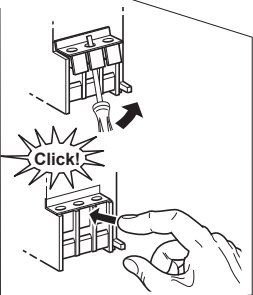
**⚠ DANGER**

**HAZARD OF ELECTRIC SHOCK, EXPLOSION, OR ARC FLASH**  
Disconnect all power before servicing equipment.  
Failure to follow these instructions will result in death  
or serious injury.



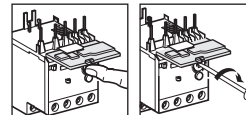
Philips N 2					Ø 6				
[mm <sup>2</sup> ]	[mm <sup>2</sup> ]	[mm <sup>2</sup> ]	[mm <sup>2</sup> ]	[mm <sup>2</sup> ]	[mm]	C [Nm]	L [mm]	Ø [mm]	
0,34	0,34 ... 2,5	0,75	0,75 ... 4	1,5	1,5 ... 4	7	0,8	7	3
2,5	0,34 ... 1,5	4	0,75 ... 4	4	1,5 ... 4				

Torque : 7 ib.in      AWG : 1 x 18 min.  
2 x 14 or 1 x 12 max.

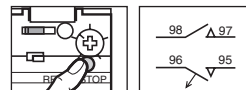


Utilisation of the special Functions / Mise en œuvre des fonctions particulières  
Einstellung der einzelnen Funktionen / Utilización de las funciones especiales  
Messa in opera delle funzioni particolari / Utilização das funções particulares

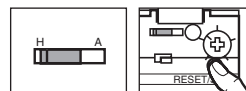
Setting the relay / Réglage du relais  
Einstellung des Relais / Ajuste del relé  
Regolazione dei relais / Regulação do relé



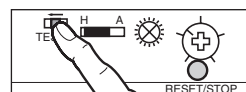
Stop function / Arrêt  
Stop Funktion / Función de parada  
Stop / Paragem



Manual reset / Réarmement manuel  
Hand Reset / Rearmamento manual  
Ricarica manuale / Rearme manual



Test function / Fonction test  
Test Funktion / Función test  
Test funzioni / Teste função



Wiring Diagram / Schéma de branchement  
Anschlußschema / Diagrama de conexión  
Schema di collegamento / Esquema de ligação

