

Cable junction boxes for harsh environment and (or) outdoor installation with box walls without cable entries



KF 8500



IP
66

PC



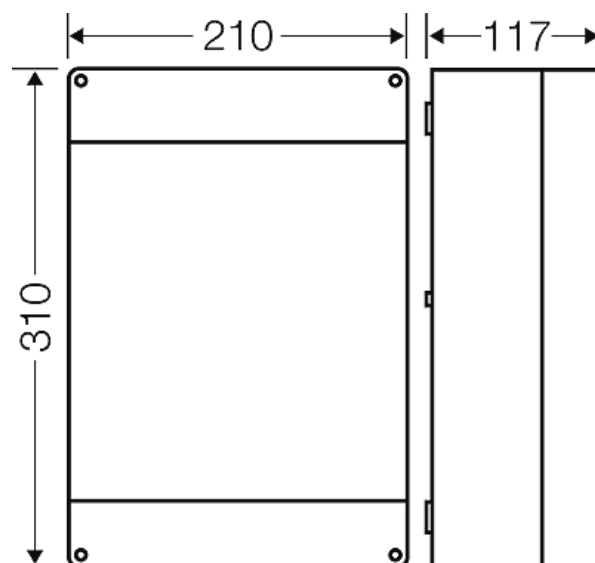
RAL
7032

- without terminals
- box walls without knockouts
- wall surface can be drilled individually for cable entry max. M 50
- "Outdoor - harsh environment and (or) outdoor"
- colour: grey, RAL 7032

wall thickness of the bottom part	3 mm
Degree of protection:	IP 66
Material:	PC-GFS (polycarbonate)
mounting width	180 mm
mounting height	280 mm
max. installation depth	88 mm
width	210 mm
height:	310 mm
depth	117 mm
Weight	1,26 kg
in accordance with	IEC 60 670-22
in accordance with	Det Norske Veritas Certificate No.: E-9149 Germanischer Lloyd Certificate No.: 12 941 - 11 HH Russian Maritime Register of Shipping, technical documentation is approved by the letter No. 250-011-2-39

Drawings

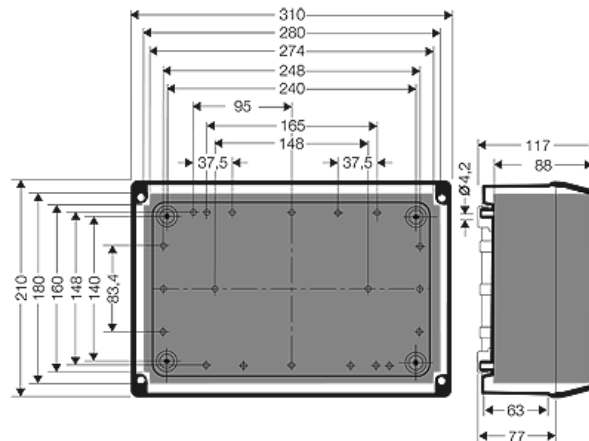
Dimension drawing



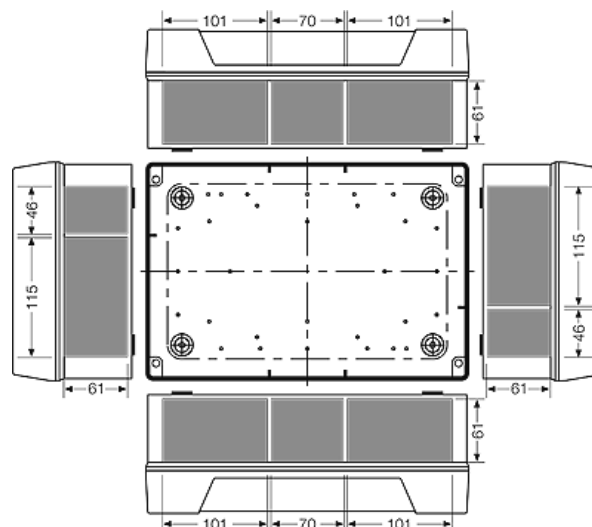
Cable junction boxes for harsh environment and (or) outdoor installation with box walls without cable entries



Detail mass



box walls



Operating and ambient conditions

Application area	Suitable for outdoor installation (harsh environment and/or outdoor). To reduce the formation and accumulation of condensed water see technical information.
Resistant to occasional cleaning procedures (direct jet)	Resistant to occasional cleaning procedures (direct jet) with high-pressure cleaner without additives, water pressure: max. 100 bar, water temperature: max. 80° C, distance => 0,15 m, in accordance with the requirements IP 69K, enclosure and cable glands at least IP 65
Ambient temperature	Average value over 24 hours + 55 °C Maximum value + 70 °C Minimum value - 25 °C
Fire protection in the event of internal faults	Demands placed on electrical devices from standards and laws Minimum requirements - Glow wire test in accordance with IEC 60 695-2-11: - 650°C for boxes and cable glands - 850°C for parts of insulating material necessary to retain current carrying parts in position
Burning behaviour	Glow wire test IEC 60 695-2-11: 960 °C

Cable junction boxes for harsh environment and (or) outdoor installation with box walls without cable entries



KF 8500











UL Subject 94: V-0
 flame resistant
 self-extinguishing

Degree of protection against mechanical load IK08 (5 Joule)

Toxic behaviour halogen-free
 silicone-free
 "halogen-free" in accordance with the examination of the cables
 and insulated wires - corrosiveness of fumes - as per IEC 754-2

Note: For material properties see technical data.